

1 Parlex Place

145 Milk Street, Methuen, Massachusetts

FOR SUBLEASE



As the exclusive agent, we are pleased to announce the following space for sublease:

Available Space: 23,302 SF - 2nd Floor
2,590 SF - 3rd Floor
25,892 SF - Total (minimum divisible to 2 spaces)

Space Type: Office - Flexible layout

Parking: Ample

Loading: 5 loading doors (2 overhead, 2 loading, 1 chemical dock)

Asking Rent: \$11.00 PSF plus electric (2 year lease minimum)

Comments: Furnishings Available

Features:

- One Parlex Place (145 Milk Street) is a well maintained office/manufacturing building totaling 172,216 SF
- Located off of Route 213 (The Loop Connector)
- 1 mile from I-495 and 2 miles from I-93
- Numerous retail amenities and restaurants

For information, contact:

Marci Alvarado

T 508.271.9219

F 508.820.2727

malvarado@pcg-ma.com

Parsons Commercial Group, Inc.
1881 Worcester Road, Suite 200
Framingham, MA 01701

T 508.820.2700

F 508.820.2727

www.pcg-ma.com

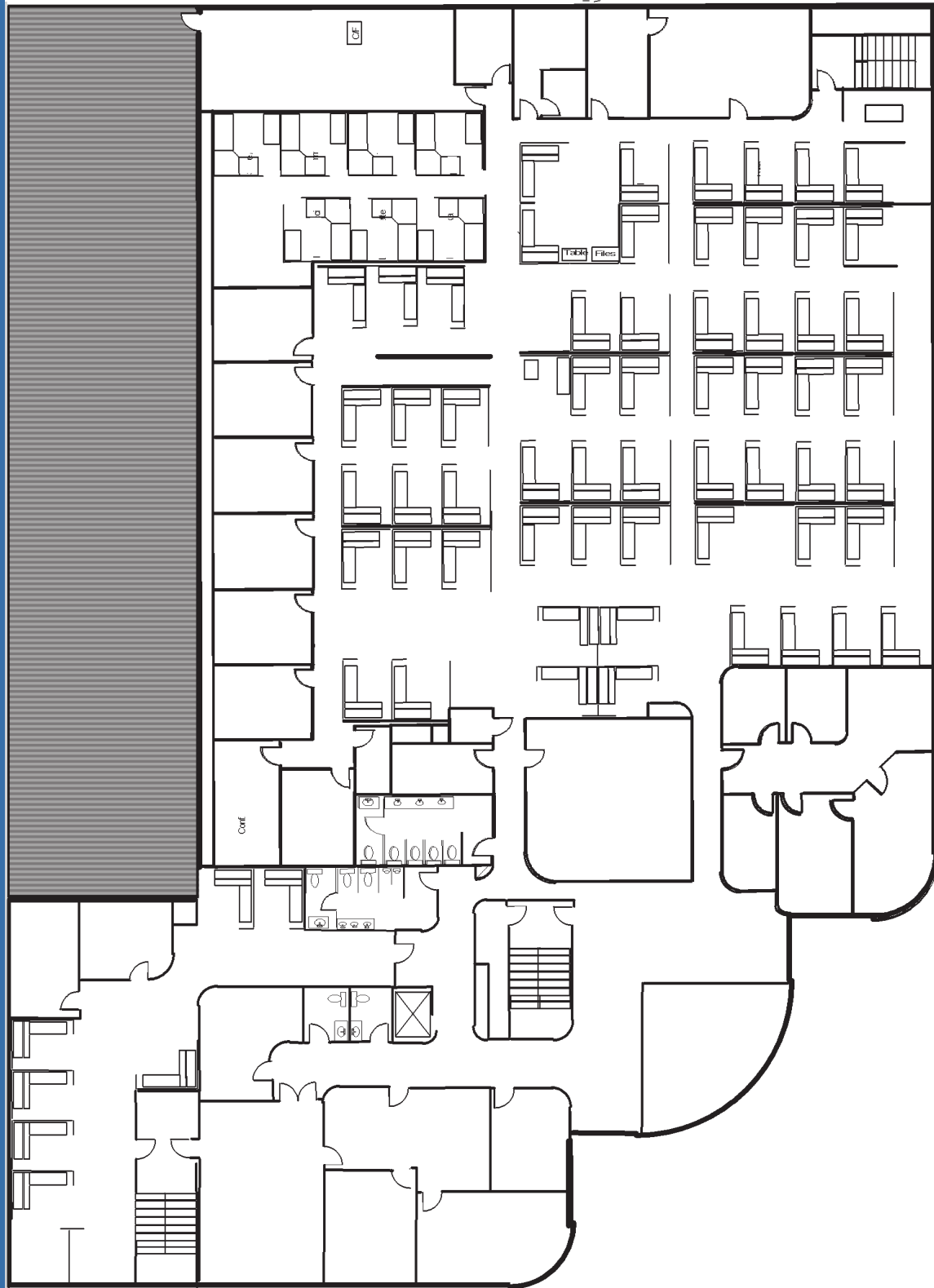


1 Parlex Place

145 Milk Street, Methuen, Massachusetts

FOR SUBLEASE

2nd Floor



For information, contact:

Marci Alvarado

T 508.271.9219

F 508.820.2727

malvarado@pcg-ma.com

Parsons Commercial Group, Inc.

1881 Worcester Road, Suite 200

Framingham, MA 01701

T 508.820.2700

F 508.820.2727

www.pcg-ma.com

Every effort has been made to furnish the most accurate information available on this property. However, all statements and conditions herein are subject to errors, omissions or removal from the market without notice.

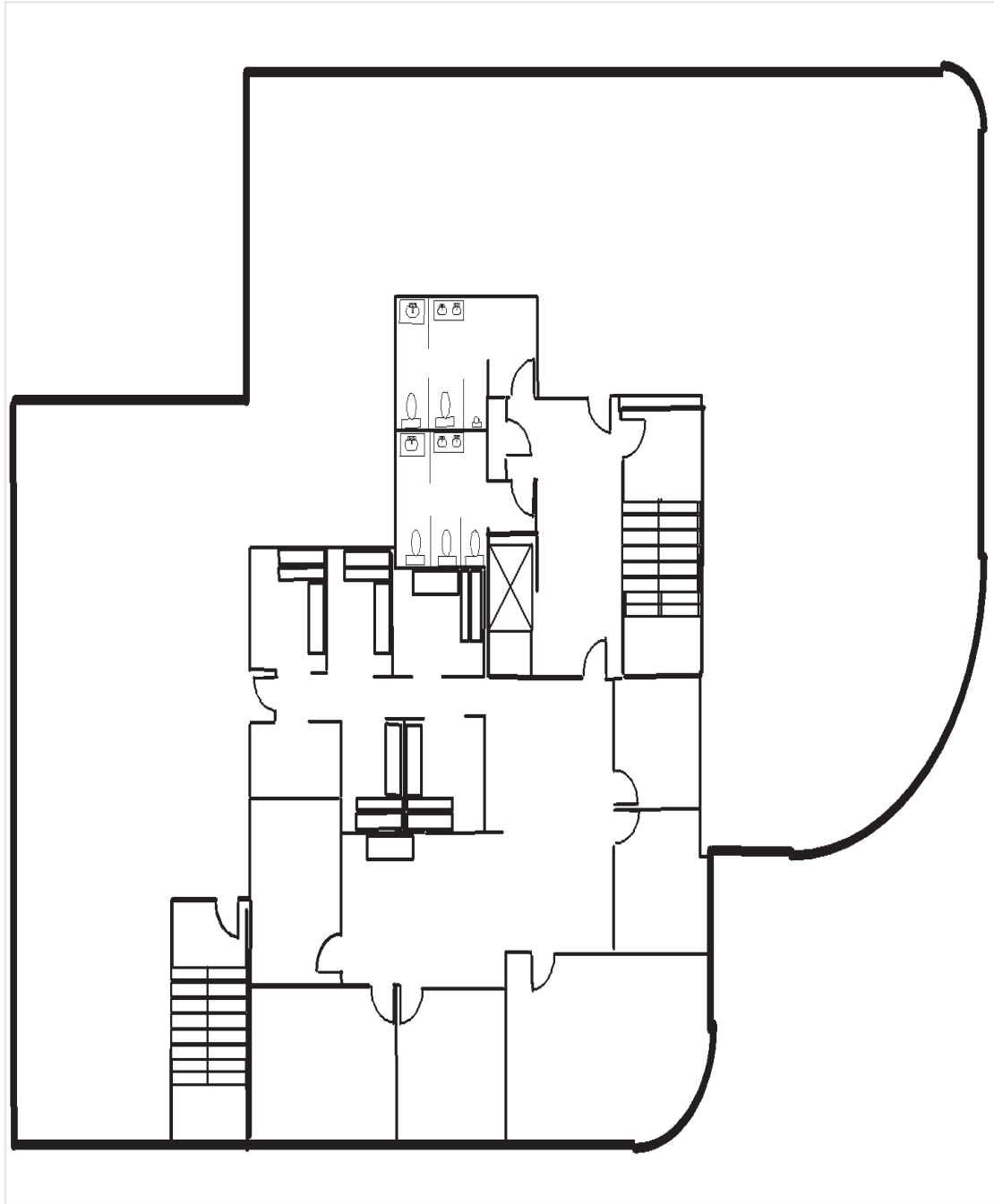
PCG PARSONS
COMMERCIAL
GROUP, INC.

1 Parlex Place

145 Milk Street, Methuen, Massachusetts

FOR SUBLEASE

3rd Floor



For information, contact:

Marci Alvarado

T 508.271.9219

F 508.820.2727

malvarado@pcg-ma.com

Parsons Commercial Group, Inc.
1881 Worcester Road, Suite 200
Framingham, MA 01701
T 508.820.2700
F 508.820.2727

www.pcg-ma.com

Every effort has been made to furnish the most accurate information available on this property. However, all statements and conditions herein are subject to errors, omissions or removal from the market without notice.

PCG PARSONS
COMMERCIAL
GROUP, INC.